

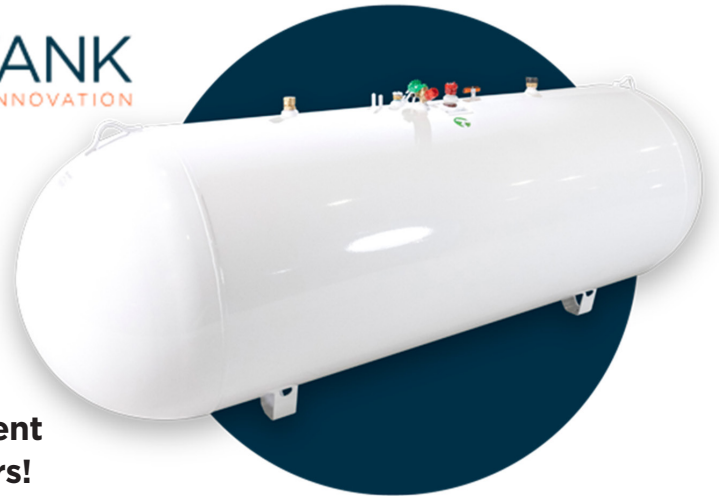


2024 CHS Energy Equipment Tank Sale TRIARC Domestic Propane Tanks

**First tank sale
in 5 years!**



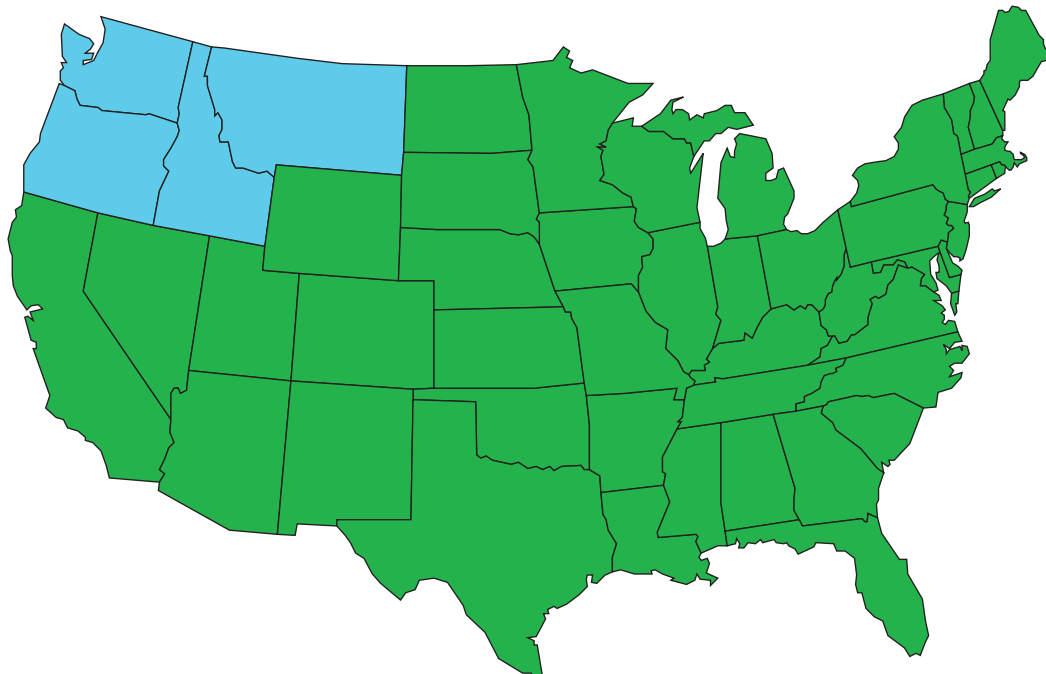
Pre-season pricing offer valid on full truck load orders of TRIARC domestic propane tank sizes listed. Receive discounted pricing on all qualifying orders including mixed tank sizes. Orders must be placed between April 10, 2024 and May 31, 2024 to receive discounted prices. **Prices include freight, restrictions apply.***



**SALE ENDS MAY 31 — Call CHS Energy Equipment
at 800-852-8186, option 1, for sale pricing orders!**

| TRIARC West Tank Sizes | |
|------------------------|-----------------|
| 119 Gallon | Vertical ASME |
| 124 Gallon | Horizontal ASME |
| 250 Gallon | ASME |
| 320 Gallon | ASME |
| 500 Gallon | ASME |
| 1,000 Gallon | ASME |
| 2,000 Gallon | ASME |

| TRIARC East Tank Sizes | |
|------------------------|-----------------|
| 119 Gallon | Vertical ASME |
| 124 Gallon | Horizontal ASME |
| 250 Gallon | ASME |
| 320 Gallon | ASME |
| 500 Gallon | ASME |
| 1,000 Gallon | ASME |
| 2,000 Gallon | ASME |



*Prices quoted do not reflect any applicable taxes, orders must be placed between the dates of April 10, 2024 and May 31, 2024. Must take delivery by July 15, 2024. CHS does not warrant any product beyond the manufactures warranty, other restrictions may apply. Call CHS Energy Equipment for more details.